

MAP 6 : DEFINING THE PALESTINIAN BANTUSTAN ELEMENT 4 - THE INFRASTRUCTURE

PREPARED AND DESIGNED BY MICHAEL YOUNAN

MATRIX OF CONTROL CONCEIVED BY:
PROF. JEFF HALPER, COORDINATOR (ICAHN)



LEGEND

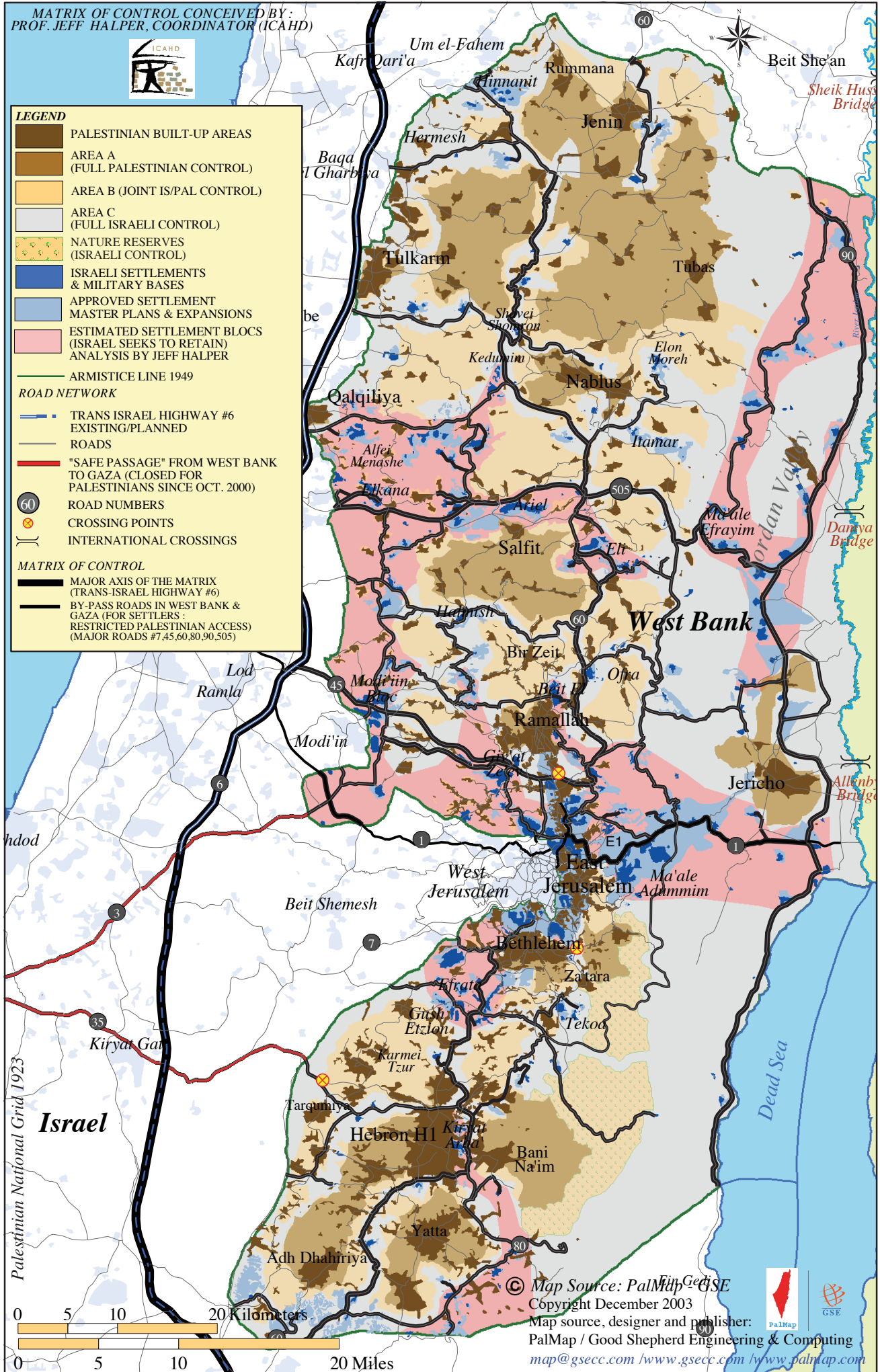
- PALESTINIAN BUILT-UP AREAS
- AREA A (FULL PALESTINIAN CONTROL)
- AREA B (JOINT IS/PAL CONTROL)
- AREA C (FULL ISRAELI CONTROL)
- NATURE RESERVES (ISRAELI CONTROL)
- ISRAELI SETTLEMENTS & MILITARY BASES
- APPROVED SETTLEMENT MASTER PLANS & EXPANSIONS
- ESTIMATED SETTLEMENT BLOCS (ISRAEL SEEKS TO RETAIN) ANALYSIS BY JEFF HALPER
- ARMISTICE LINE 1949

ROAD NETWORK

- TRANS ISRAEL HIGHWAY #6 EXISTING/PLANNED
- ROADS
- "SAFE PASSAGE" FROM WEST BANK TO GAZA (CLOSED FOR PALESTINIANS SINCE OCT. 2000)
- 60 ROAD NUMBERS
- CROSSING POINTS
- INTERNATIONAL CROSSINGS

MATRIX OF CONTROL

- MAJOR AXIS OF THE MATRIX (TRANS-ISRAEL HIGHWAY #6)
- BY-PASS ROADS IN WEST BANK & GAZA (FOR SETTLERS: RESTRICTED PALESTINIAN ACCESS) (MAJOR ROADS #7,45,60,80,90,505)



© Map Source: PalMap/GSE
 Copyright December 2003
 Map source, designer and publisher:
 PalMap / Good Shepherd Engineering & Computing
map@gsecc.com / www.gsecc.com / www.palmap.com